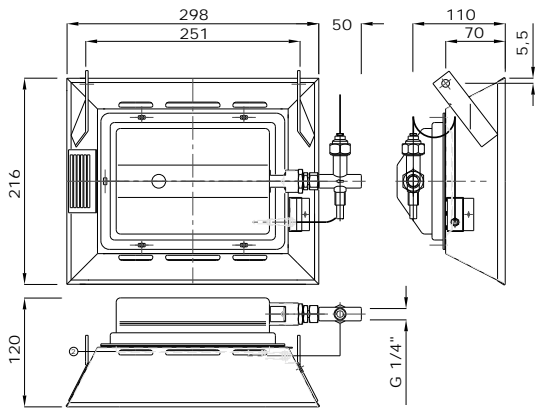
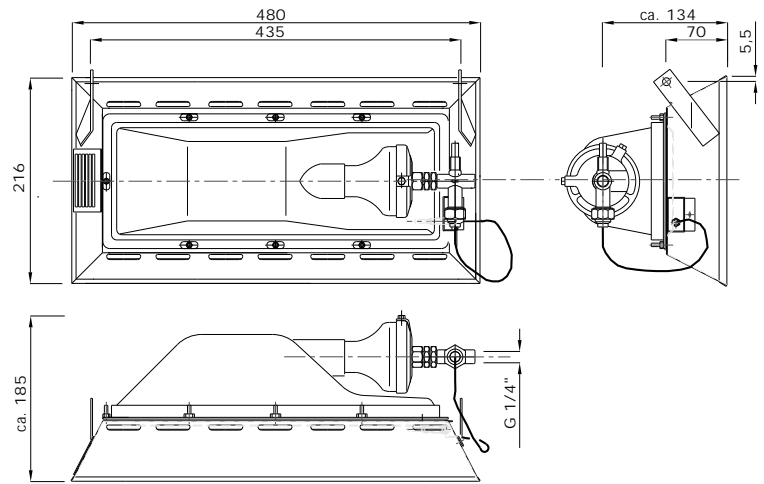


Schwank - Gas fired Radiant heaters



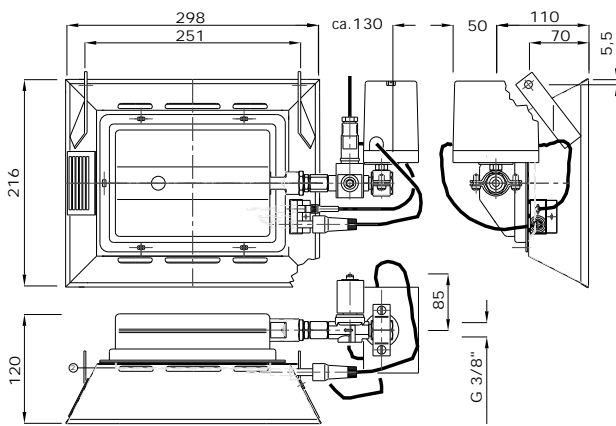
TerraSchwank 4

601.2 BE



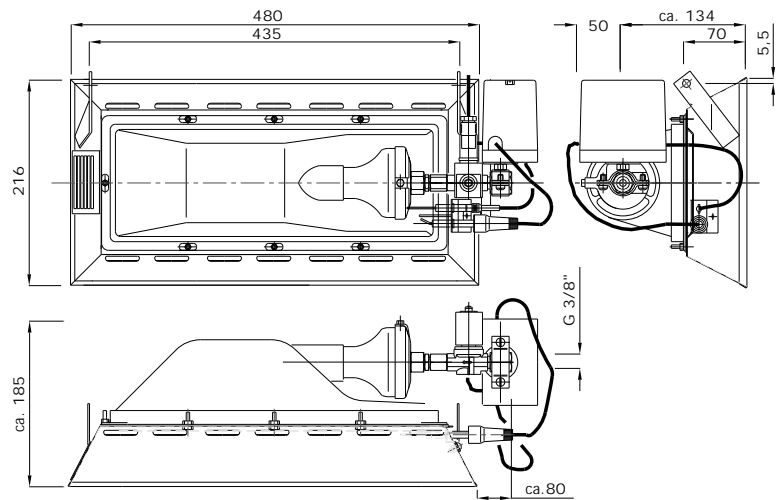
TerraSchwank 7

602 BE



TerraSchwank 4A

601.2 BEA



TerraSchwank 7A

602 BEA

Gas	Terraschwank				
	601.2BE	601.2BEA	602BE	602BEA	
GB + Eireland					
Nat. gas H / G20 (Hu,n = 9,97 kWh/m ³)	Nominal input in kW	3,1	3,1	6,0	6,0
	Gas usage in m ³ /h	0,31	0,31	0,61	0,61
Propane /G31 (Hu,n = 12,87 kWh/kg)	Nominal input in kW	2,9	2,9	5,2	5,2
	Gas usage in m ³ /h	0,22	0,22	0,41	0,41

Weight ca. in kg	3,5	5,5	6	8
Electrical power in W	-	50	-	50
Gas connection (inside)	1/4"	3/8"	1/4"	3/8"
Electrical connection in V	-	230V/50Hz~	-	230V/50Hz~
Manual ignition	Yes	No	Yes	No
Thermoelectric security valve	Yes	No	Yes	No
Spark ignition and ionisation-probe automatically controlled	No	Yes	No	Yes

The nominal input is the warmth capacity of the gas, calculated on the caloric value H_{t,n}

Applications

- Plaque heaters for terraces, halls, churches etc.
- For spot heating
- Warmth transfer mainly through infrared heating rays

Burner pressure

GB

- Nat. gas H: 20 mbar
- Propane: 37 mbar

IE

- Nat. gas H: 20 mbar
- Propane: 37 mbar